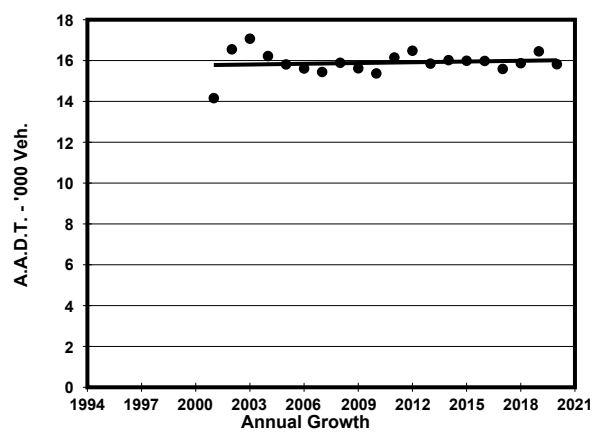
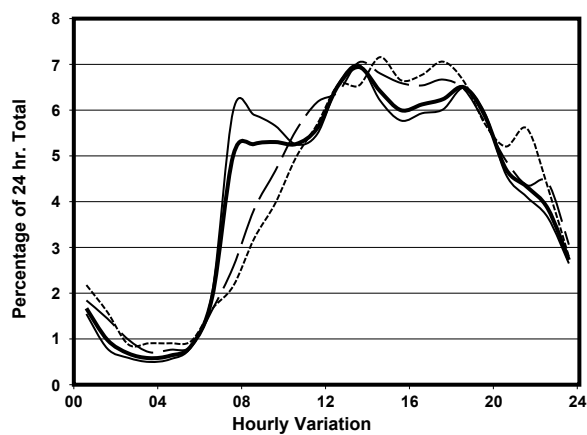
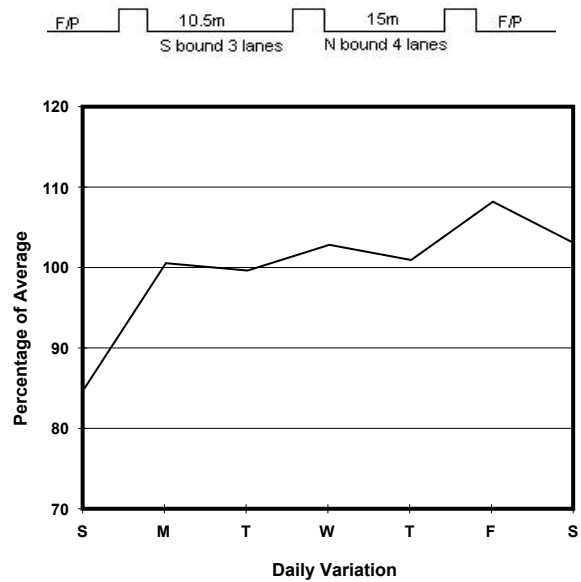
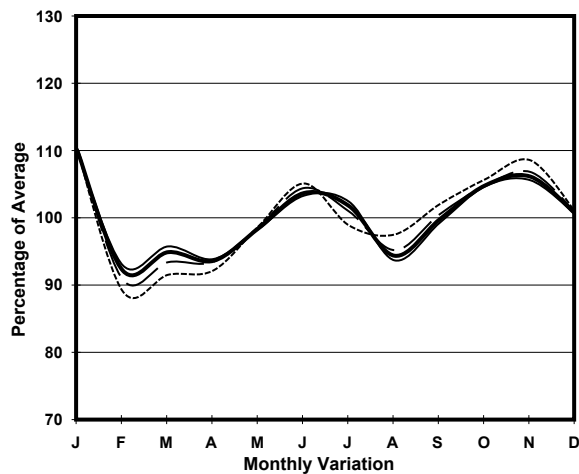


YEAR 2020

LINK HOI WANG RD (from HOI TING RD to CHERRY ST RA)

COVERAGE (B) STATION 4220
ROAD NETWORK MAJOR
ROAD TYPE PRIMARY DISTRIBUTOR

1. TRAFFIC FLOW VARIATION AND GROWTH



— All day - - - - - Mon.- Fri. Sat. - . - . - Sun.

2. TRAFFIC CHARACTERISTICS (BY DIRECTION)

Parameter	All - Day	Mon. - Fri.	Sat.	Sun.
SOUTH BOUND				
A.A.D.T.	7440	7650	7690	6510
R 12 / 24 - %	71	71.8	69.2	68.6
R 16 / 24 - %	89.5	89.9	88.6	88.2
AM Peak Hour	0800-0900	0800-0900	0900-1000	0900-1000
One-way flow at AM peak hour	400	460	360	260
T - % (AM)	-	13.9	-	-
PM Peak Hour	1800-1900	1800-1900	1700-1800	1800-1900
One-way flow at PM peak hour	490	510	510	450
T - % (PM)	-	11	-	-
Prop.of commercial vehicles - 16 hr.	-	14.6	-	-
NORTH BOUND				
A.A.D.T.	8380	8680	8710	7070
R 12 / 24 - %	71.3	72.6	69.4	66.2
R 16 / 24 - %	90.3	91	88.8	88.1
AM Peak Hour	0900-1000	0700-0800	0900-1000	0900-1000
One-way flow at AM peak hour	450	530	410	280
T - % (AM)	-	16.6	-	-
PM Peak Hour	1700-1800	1800-1900	1600-1700	1700-1800
One-way flow at PM peak hour	540	550	620	510
T - % (PM)	-	12.6	-	-
Prop.of commercial vehicles - 16 hr.	-	11.9	-	-

3. OTHER INFORMATION AND COMMENT

4. Vehicle classification and occupancy - Monday to Friday

Time		Class of vehicle									
		Motor Cycle	Private Car	Taxi	Private LB	PLB	Goods veh.		Non Fr. Bus	Fr. Bus	
							Light	M & H		SD	DD
0700-0800	Pro	2.3	18.7	24.3	13.6	7.5	12.6	1.4	9.8	0.2	9.5
	Ocp	1.0	1.5	1.8	7.2	9.4	1.4	1.3	13.1	24.5	17.4
0800-0900	Pro	2.7	55.5	13.1	1.5	4.9	11.9	1.5	0.3	0.2	8.4
	Ocp	1.0	1.3	1.8	4.0	8.6	1.6	1.8	1.0	14.5	15.5
0900-1000	Pro	2.6	37.2	17.3	1.1	5.2	21.4	2.6	0.4	0.2	12.1
	Ocp	1.0	1.4	1.5	2.3	8.2	1.6	2.1	2.0	11.5	6.7
1000-1100	Pro	4.0	26.7	20.3	1.2	6.4	26.3	2.4	2.0	0.2	10.5
	Ocp	1.0	1.5	1.5	1.3	3.9	1.5	2.0	4.0	13.0	7.5
1100-1200	Pro	3.1	37.8	17.4	0.4	4.0	22.7	1.8	2.2	0.2	10.3
	Ocp	1.0	1.6	1.4	2.0	4.4	1.6	1.5	5.8	12.0	8.4
1200-1300	Pro	2.9	39.4	17.7	2.9	5.1	17.0	2.5	4.0	0.2	8.5
	Ocp	1.0	1.5	1.4	4.4	6.9	1.7	1.4	6.9	15.0	10.4
1300-1400 Peak hour	Pro	7.3	38.9	11.0	7.8	3.5	17.7	1.7	5.8	0.1	6.2
	Ocp	1.1	1.6	1.6	8.3	8.1	1.6	1.7	13.7	13.5	14.6
1400-1500	Pro	4.2	42.2	15.1	1.6	4.5	20.3	2.6	1.9	0.1	7.5
	Ocp	1.1	1.6	1.6	3.4	6.3	1.7	1.3	4.8	11.0	11.5
1500-1600	Pro	2.2	41.7	19.9	3.0	4.4	17.7	0.7	1.5	0.3	8.6
	Ocp	1.0	1.6	1.5	2.6	4.7	1.5	2.0	9.0	15.3	12.6
1600-1700	Pro	6.9	37.2	22.2	2.6	5.5	15.3	0.4	0.7	0.1	9.1
	Ocp	1.1	1.6	1.3	2.9	6.9	1.7	1.0	3.5	11.0	12.6
1700-1800	Pro	6.2	45.5	17.0	1.2	6.2	11.6	1.2	1.2	0.3	9.9
	Ocp	1.1	1.5	1.7	4.7	5.1	1.3	1.3	5.0	14.3	15.9
1800-1900	Pro	7.9	50.6	13.5	0.3	4.9	10.8	2.0	1.3	0.1	8.5
	Ocp	1.1	1.5	1.5	2.0	10.3	1.5	2.5	5.8	8.0	19.5
1900-2000	Pro	8.7	51.1	19.4	0.3	3.9	7.4	0.0	1.0	0.2	7.8
	Ocp	1.0	1.5	1.7	1.0	9.5	1.4	0.0	10.3	10.0	15.4
2000-2100	Pro	5.7	55.4	15.3	0.0	5.7	6.5	0.0	0.9	0.1	10.5
	Ocp	1.0	1.6	1.5	0.0	5.8	1.5	0.0	7.0	9.0	11.6
2100-2200	Pro	10.3	43.0	19.3	0.6	9.0	3.2	0.0	1.3	0.3	13.0
	Ocp	1.2	1.5	1.6	4.0	3.8	1.2	0.0	8.5	6.5	14.2
2200-2300	Pro	2.6	50.1	16.3	0.0	8.4	8.4	1.6	1.6	0.1	10.8
	Ocp	1.2	1.6	1.6	0.0	3.8	1.4	1.0	3.3	6.0	14.1
16 hours	Pro	5.0	42.3	17.1	2.4	5.3	14.8	1.4	2.2	0.2	9.2
	Ocp	1.1	1.5	1.6	5.7	6.6	1.6	1.7	9.2	12.8	12.8

Legend: Pro. Proportion of vehicles in % (Sum may not add up to 100% due to figure rounding)*

Ocp. Average occupancy of vehicles including both driver and passengers*

M&H Medium and Heavy

* All traffic data are collected from combined bounds